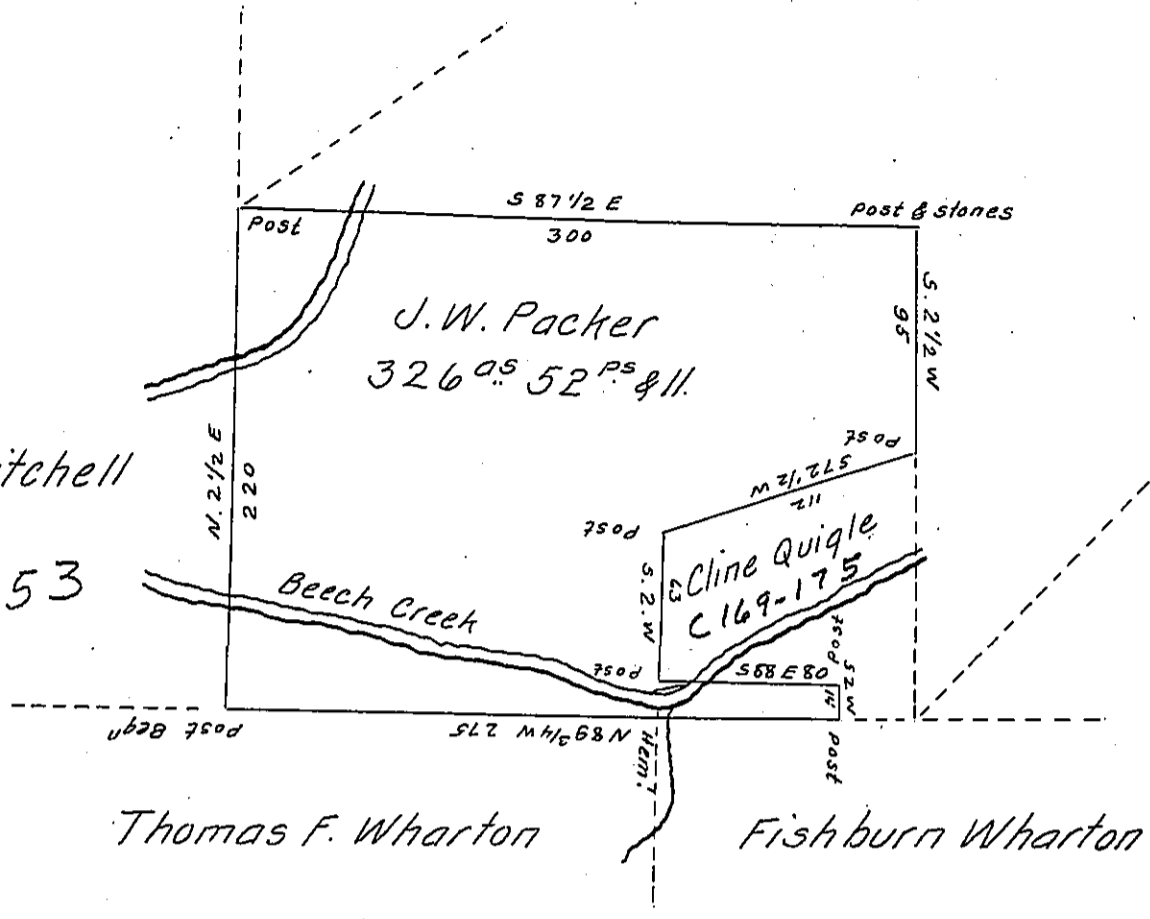


William P. Mitchell

C 161-53



A tract of land situated on the waters of Beech Creek in Curtin township Centre County. Containing three hundred and twenty six acres and fifty two Perches and the Allowance &c. Surveyed the 10th day of August 1866 on a Warrant granted to J. W. Packer. Dated the 7th day of June 1866.

To J. M. Campbell Esq.
Surveyor General

Henry P. Troziyulny
County Surveyor.

IN TESTIMONY that the above is a copy of the original remaining on file in the Department of Internal Affairs of Pennsylvania, made conformably to an Act of Assembly approved the 16th day of February, 1833, I have hereunto set my Hand and caused the Seal of said Department to be affixed at Harrisburg, this seventh day of July 1906.

Isaac R. Brown
Secretary of Internal Affairs.